

LIGHT DUTY



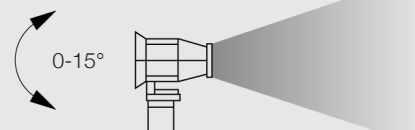
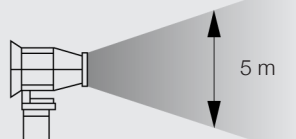
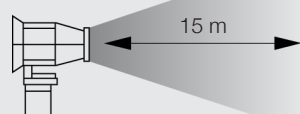
WLP Demolitor 10

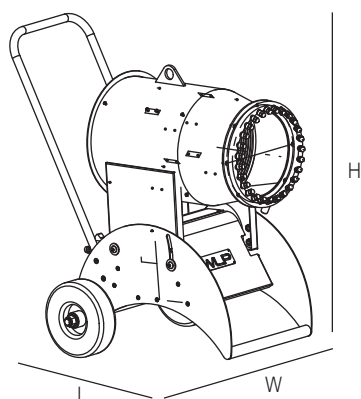
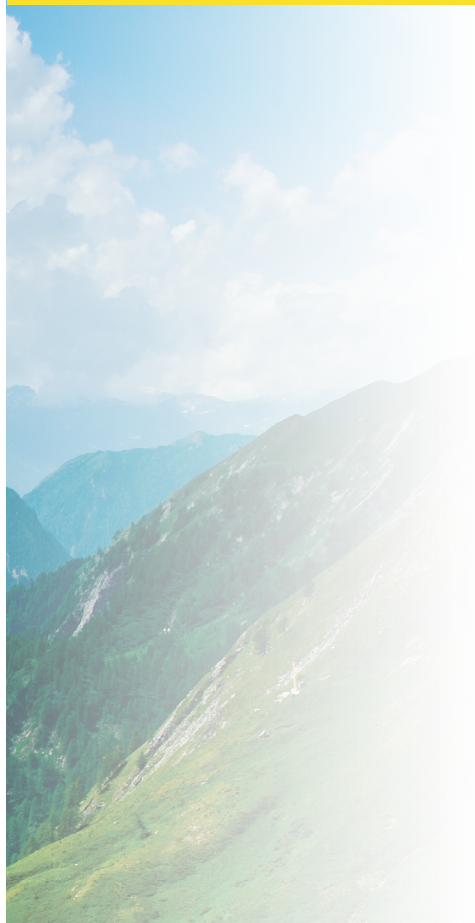
Caratteristiche

- Ideale per piccole aree
- Spina 220 Volts 16A (o su richiesta)
- Ruote per un facile spostamento
- Gancio di sollevamento
- Comoda maniglia di presa
- Ugelli intercambiabili per ottimizzazione della portata dell'acqua
- Ugelli in inox

Features

- Ideal for small spaces
- Plug 220 Volts 16A (on request)
- Wheels for easy movement
- Lifting hook
- Comfortable handle grip
- Interchangeable nozzles for optimizing water flow
- Stainless steel nozzles




Dati Tecnici
Technical Data
WLP Demolitor 10

Potenza installata	Installed power	kW	1,5
Potenza ventilatore	Fan power	kW	0,75
Potenza pompa acqua	Water pump power	kW	0,75
Grado di protezione	Protection rating	IP	55
Alimentazione	Power supply	Volts / Hz	su richiesta / on request
Alzo	Pitching	°	0° - 15°
Distanza max del getto	Max throw distance	m	15
Rumorosità	Noise level	Lwa	< 93
Peso a secco	Dry weight	Kg	64
Pressione minima	Minimum pressure	bar	1
Presa elettrica	Electric socket		CE 16 A
Collegamento idrico	Water connection		Garden

Dimensioni
Dimensions
L x H x W (mm)

650 x 1000 x 900

Consumo acqua con ugelli da 5 GPH
Water consumption with 5 GPH nozzles
BAR
8

L./min.

18